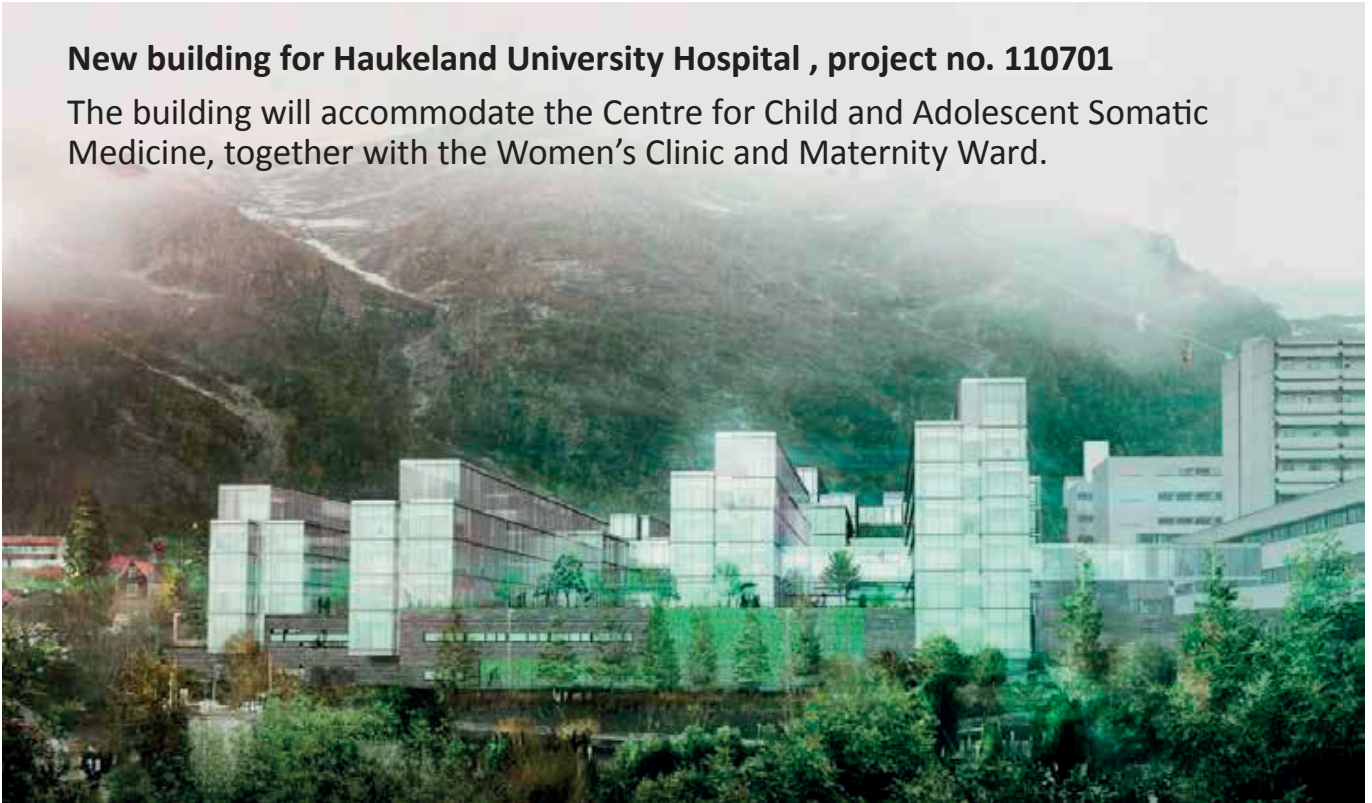


ART PLAN

Construction Phase 2

New building for Haukeland University Hospital , project no. 110701

The building will accommodate the Centre for Child and Adolescent Somatic Medicine, together with the Women's Clinic and Maternity Ward.



Contents

1.	MAJOR PROJECTS	2
1.1	GARDENS	3
1.2	ENTRANCE AREA LEVEL -1 U1	6
1.3	GLASS WALLS	9
1.4	FLOOR	10
1.5	OUTDOOR ENTRANCE PLAZA	11
1.6	LANDMARK WORK	14
2.	ACQUISITIONS AND THE EXISTING COLLECTION	15
2.1	THE EXISTING COLLECTION	15
2.2	PURCHASE OF AUTONOMOUS ARTWORKS	17
3.	EDUCATION/INFORMATION	18
3.1	BOOK PROJECTS	19
4.	BUDGET	20
5.	PROGRESS PLAN	21

Attachments: Drawings of the building

1. Major projects

The major projects are described in Chapter 6 of the general Art Plan. In accordance with the objectives of that Plan, the Art Committee (the “Committee”) has selected areas that will be much-used and/or most widely accessible. As in Phase 1, the entrance area, selected glass walls near the entrance area, and the gardens between the linked parallel wings of the building, have all been selected as sites for major projects. In addition, we want to locate an art project in the central outdoor entrance plaza between the Phase 1 and Phase 2 buildings. Finally, the Committee wishes to place some older works from the hospital’s existing collection in prominent positions in the departments that will be moving into the new building. The existing collection comprises more than 100 paintings, drawings and prints, together with a smaller number of sculptures.

BUS2 - GARDEN LAYOUT

LEVEL 1 (STREET LEVEL) OUTDOOR ENTRANCE PLAZA

This area is intended for patients, families and staff.

The plaza is paved and features planters made of weathering (COR-TEN) steel. A central area has been allocated for outdoor tables (child and adult furniture) for the canteen in BUS2. The southern end of the entrance plaza will feature a small play area with mini trampolines.

There will be a taxi drop-off area and a few parking spaces.

LEVEL 1 (STREET LEVEL) GARDENS

This area is intended for patients and families.

The gardens have been landscaped with paths and terraces. The planted beds feature small slopes and “stepping stones”.

The area has been planned so that children can run around and play, and also explore the plants. There are also areas for relaxation on the terraces. These are equipped with sunbeds and tables.

LEVEL -1 (U1) GARDENS

This area is intended for staff and to some extent for families. The two gardens to the north are intended for the university departments.

Only the two northern gardens are planted. The other gardens consist of small paved terraces.

LEVEL -2 (U2) GARDENS

This area is intended for families and staff, and to some extent for patients.

The gardens have an overhanging terrace to the east, which is the sunniest spot. The rest of the area features shade-tolerant plants. These gardens are intended as a place from which to look upwards.

OUTDOOR AREAS NORTH & SOUTH

Entry is prohibited to the southern area, while a path runs through the northern area.

The southern area features a shaded garden that you can look down into.

The northern area features open lawn with groups of trees.



The illustration shows the Phase 2 gardens. The numbers refer to floor levels.

1.1 Gardens

Total budget for Phase 2 gardens: NOK 2,750,000.

Site description and reasons for choosing particular kinds of art/locations.

The Committee refers to the description and reasoning set forth in the general Art Plan. The Committee wishes to create a sculpture park containing works in a variety of styles.

The art project for the three gardens is a major project at the new hospital and relates to both phases of construction. In the opinion of the Committee, this project will satisfy the main objectives of the Art Plan regarding the importance of reflecting users' particular needs, their understanding of the world, and their capacity for reflection. The project should provide immediate sensory experiences, but should also provoke a deeper sense of recognition and affirmation.

The project should take account of, but not be ruled by, the themes of the three garden spaces: forest, mountain, and water. We wish to locate works in each of the three Phase 2 garden areas, while prioritizing the areas that will be most used. The Phase 2 gardens will be more open and accessible than the Phase 1 gardens.

Implementation

We refer to the main section of the Art Plan, Chapter 6, The Gardens: Acquisition of artworks. We will conduct a search for our own artworks for Haukeland Sculpture Park. Works that we believe will be best suited for Haukeland University Hospital and all users of the new buildings. We will search with enthusiasm and curiosity, thinking of patients, families and staff. We want this to be a sculpture park that creates positive encounters between the art and the hospital's users. We will find art that provokes wonder and joy. Some sculptures will be purchased directly from artists and others from exhibitions. Yet others will be commissioned for specific locations, and some will be selected from Haukeland's existing collection.



The garden between wings 052 and 053, seen from the atrium. This will be an important and much-used area.

“Pearls”

Budget: NOK 1,000,000

“Pearls”, a project by the artists Mari Røysamb and Ole Rosén, will be continued, on a larger scale, in Phase 2. This will give users of the gardens a sense of recognition, and contribute to linking the gardens together. The artists’ contractual payment for both phases of this project is NOK 1,450,000. We envisage that two-thirds of this amount will be covered by the budget for Phase 2. The Committee wishes to commission Røysamb and Rosén to continue their project. They will be asked to collaborate with Schønherr (the landscape architects for the construction project) and take account of Schønherr’s plans and themes for the individual gardens.



Here we see some of the gardens constructed during Phase 1.

Mari Røysamb and Ole

Rosén, “Pearls”. This project will be continued in Phase 2.

Artists

Mari Røysamb (born 1964) www.mariroysamb.no

Studied at the Oslo School of Architecture and Design; San Lorenzo, Florence; and the Academy of Fine Art, Oslo. She has completed several public art commissions and her work has been purchased by a number of institutions, including Norges Bank, the West Norway Museum of Decorative Art and Arts Council Norway.

She lives and works in Oslo, Norway.

Ole Rosén (born 1958) www.olerosen.no

Studied at Hovedskous College of Art, Gothenburg; the Central Academy of Applied Arts, Beijing; and the Academy of Fine Art, Oslo. He also has a bachelor’s degree in art history/literature and ethnology. He has completed several public art commissions. His work has been purchased by a number of institutions, including the National Gallery and the Storting.

He lives and works in Oslo, Norway.

Røysamb and Rosén have collaborated on several other public art projects.

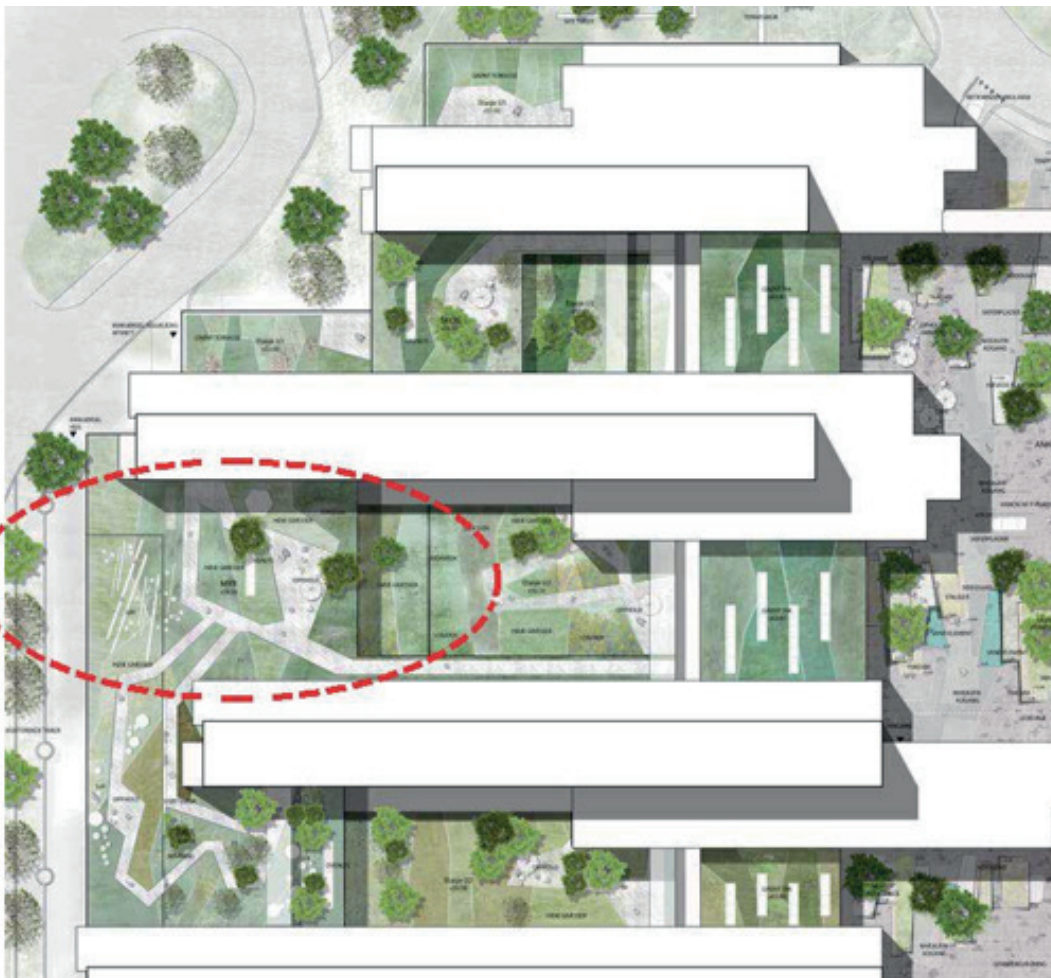
Monumental project

Budget: NOK 1,750,000

In addition to “Pearls”, which is a major project, the Committee wishes to install another large-scale, visually impressive project, in the garden area between Wings 052 and 053. This project will involve two adjacent garden spaces, one on Level 1 and one on Level -2. These gardens will be among the hospital’s most heavily used gardens, and a project here will be visible to many users. It will also be visible through the glass walls from the outdoor entrance plaza. We want a work that will invite interaction.

Note that the space in question also contains, or is impacted by, a number of artworks, including “Pearls” and Edith Lundebrekke’s large installation on the entrance plaza. Artists must be informed about this, and will need to be observant and sensitive as to how different artworks interact.

The Committee will issue a call-out to participate in an open prequalification round, with the objective of selecting 4-5 artists to participate in a closed competition. The Committee will develop a subsidiary art plan for this project in connection with the call-out. The Committee intends to issue the call-out in autumn 2019, with the competition to be held thereafter.



The Committee wishes to install a monumental work in the area circled in red between Wings 052 and 053.



This is the first area encountered when entering the hospital through the public entrance on Level -1. The Committee wishes to install a welcoming work that is also stimulating to the senses.

1.2 Entrance area Level -1 (U1)

Site description and reasons for choosing particular kinds of art/locations.

Like Phase 1, the Phase 2 building will have an entrance area on street level. Many visitors, however, will arrive via the Accident & Emergency (A&E) Department on Level -1 (U1). The street-level entrance area can be accessed from Level -1 (U1) by stairs or lift. The street-level entrance will be home to two other art projects, one on the glass walls (Project 1.3.) and one in the outdoor entrance plaza (Project 1.4.).

A very large number of the hospital's users will spend time in or pass through this area.

The Committee proposes that two projects should be installed in Level -1 (U1). This will be a very active and busy area. We want initial impressions of the entrance area to be welcoming. Accordingly, the Committee has designated these spaces as priority areas for art. For many people, this area will be their first encounter with the hospital.

Most people using this entrance area will be passing through it. Accordingly, the Committee wants to install a work that makes an immediate sensory impression. The Committee envisages a project with a clearly defined visual style, preferably with a strong use of colour and/or light. The committee also envisages a project that will inspire a sense of recognition, and also have the potential to inspire joy and wonder.

Waiting area – chill out space

Budget: NOK 250,000

The waiting areas in Level -1 (U1) will be heavily used. The Committee envisages one or more works in an energetic style that can appeal to a young audience. At the same time, this should be a place where you can choose to be alone.

Implementation

The Committee envisages a work painted directly on the wall. It could make references to graffiti art, as this visual language is familiar to many young people. We wish to issue a direct invitation to an artist to undertake this commission. The artist will supply sketches for approval by the Committee.

Artist

Bertil Greging (born 1957) www.bertilgreging.com
Works in a wide range of media, including drawing, collage, printmaking, painting and installation. We could describe his style as fearless and playful. As a result, his works may evoke visual associations with various eras in art history, including Expressionism and Cubism, as well as to a visual language more closely related to graphic design and graffiti, often with an element of humour. His works have been purchased by institutional and corporate collections including the National Gallery, Arts Council Norway, Malmö Art Museum and Equinor.

Greging lives and works in Oslo, Norway.



*Bertil Greging
Untitled*

Example of a work by Greging.

Public entrance on Level -1 (U1)

Budget: NOK 750,000

This area is primarily a parking and pick-up and drop-off area. Accordingly, it is not a place where one would tend to linger. An artwork for this location needs to take account of the level of activity and traffic. This lower-level arrival area will not have the feeling of openness that will characterize the architecture of the higher floors. An art project for this location should endow the area with a sense of value.

Implementation

The Committee is looking for a light-based work that will have a life-enhancing and welcoming effect. This is a busy parking area, and it is also where ambulances will arrive. A light-based work will help lighten the first impressions of patients and their families. We wish to issue a direct invitation to an artist to undertake this commission. The artist will supply sketches for approval by the Committee.



*Hilde Hauan Johnsen
Installation.
Jessheim Upper Secondary
School.*

*Example of work by Johnsen
Tapestry
Warp: fibre-optic cables
Weft: wood, metallic thread.*

Artist

Hilde Hauan Johnsen (born 1953) www.hildehauanjohnsen.no
Norwegian artist and scenographer, Professor of Textiles at the Bergen Academy of Art and Design since autumn 2004. Has completed a number of public art and scenography commissions, and has exhibited in Norway and abroad. Has undertaken several study residencies abroad. In recent years, her artistic work has involved combining textiles with new technology. In 2018, she received the Ulrik Hendriksen Special Award from the Visual Artists' Benevolent Fund for her longstanding commitment to the artistic community in Norway.

1.3 Glass walls

Budget: NOK 350,000

Site description and reasons for choosing particular kinds of art/locations.

In Phase 2, we have selected an area of glass wall next to the street-level entrance to Wing 052 for the execution of an artwork on glass. This will establish a visual connection between the Phase 1 and Phase 2 entrances. The design should exploit the unique transparency of glass. It is important that the colours are translucent, rather than opaque, and that the design does not interfere with the openness of the architecture.

The Committee has held discussions with the hospital's Youth Council, which would prefer a style that will appeal to older children/teenagers. Their reasoning is that the art on the glass walls in Phase 1 is more directed at younger children, so the Council would now like something for older users. The Council expressed a desire for "colours and patterns", preferably "with references to street art".

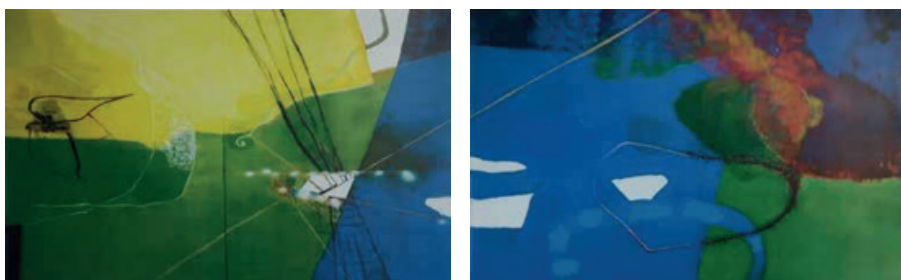
Implementation

During the competition held for works on glass for Phase 1, we received a large number of applications from highly competent and interesting artists. The Committee has now reviewed some of the materials from that competition.

In light of this review process and the views of the Youth Council, we wish to commission Anne K. Wille to complete this project. Her style is very suitable: abstract landscapes in strong colours that are pierced in places by playful lines. Wille also has a proven track record in public art.

The project will be developed in collaboration with the Committee and the glass contractor.

*Anne K. Wille
The theory of everything
Sketch for preparatory project.
An adapted version will be installed on the glass windows by the entrance.*



Artist

Anne Knutsdatter Wille (born 1958) www.anneknutsdatter.no
Studied at the Western Norway Art Academy, Bergen (graduated 1985). Long experience of projects involving children. In this connection, we should make special mention of a collaboration between Wille and Ytre Arna Kindergarten. The goals of the project were to stimulate children's curiosity about art in order to encourage creativity and storytelling, as well as to give children the opportunity to express themselves through artistic experiences. Wille also completed the glass project for Phase 1, which was very successful. Commissioning the same artist to complete both projects will create a visual link between the two buildings.

1.4 Floor

Budget: NOK 500,000

Site description and reasons for choosing particular kinds of art/locations.

User feedback indicates that the Phase 1 art projects involving the floors in the school area have been successful. In particular, the youngest users are enjoying the floor-based art. The Committee wants to commission another floor-based project for Phase 2. This is partly because of the positive feedback from Phase 1, but also because Phase 2 has relatively few wall surfaces that are suitable for art.

In our view, the five bridges linking the parallel glass wings are particularly suitable candidates for a floor-based project, as these bridges will be free of furniture or other equipment that could interfere with or cover the art. The art project should be clearly visible and interact with the architecture and garden spaces outdoors.

Reasons for choice of artist and plan for implementation

The Committee proposes to award the commission directly to Ida Carolyn Helland-Hansen. Her narrative approach is capable of engaging a wide audience. Her earlier works have a sense of inclusivity, in their references to familiar everyday situations, while at the same time they present unresolved narratives that are open to interpretation.

The Committee proposes to put the artist directly in touch with the manufacturer of the floor covering specified for the bridges. The project will need to be coordinated with the building schedule.



*Ida C. Helland-Hansen
Once upon a time...
From the floor of the Hospital
School
(Phase 1).*

Artist

Ida Carolyn Helland-Hansen (born 1963)

www.kunstnerforbundet.no/kunstnere/138; Ida-Helland-Hansen Studied at the Bergen Academy of Art and Design, specializing in textiles. Graduated 1989. In recent years she has combined textile techniques with painting and collage. Her works often contain narrative references, often based on personal experience or historical events. The narratives are layered into her images in the form of subtle fragments that are sensitively and painstakingly assembled. Some elements are camouflaged and erased, while others are emphasized, in an approach that creates multiple layers of meaning.



Perspective rendering of outdoor entrance plaza, looking north. Phase 1, now completed, is on the right, while Phase 2 is on the left.

1.5 Outdoor entrance plaza

Budget: NOK 2,500,000

Site description and reasons for choosing particular kinds of art/locations.

All visitors to the hospital will cross the plaza to be constructed between the Phase 1 and Phase 2 buildings. This plaza will be a very busy area. The plaza is approximately 100 metres long, and its width varies between approximately 15 and 35 metres. The plaza's most important function is as an outdoor entrance area. The plaza will be landscaped with a roadway and pedestrian pathways, and will also need to include access for maintenance vehicles. Any art installation must prioritize the safety of the area's users.

As a starting point, we have proposed paving the area with Alta quartzite, and installing a reflecting pool, plants and seating areas. The plaza must be completed in time for the opening of Phase 2 in 2022/2023, and work on the art planning needs to start immediately.

All of this area, which will be users' first encounter with the hospital, has been designated as a potential location for art. The overarching concept for the project embodies the principles set forth in the general Art Plan.

The Committee is looking for a project that:

- grasps but simultaneously challenges the architectural logic;
- shifts our understanding of the plaza's function and the intersection between indoors and outdoors; and
- is welcoming and inclusive.

The winning artist will be expected to enter into a close and binding collaboration with the architectural group. The artist must anticipate that it will be necessary to travel to project-planning meetings.

Implementation

A commission of this type requires an artist able to document their understanding of complex spatial situations. We were looking for an artist who is highly receptive to and perceptive of the possibilities offered by this space. In summer 2016, the Committee announced a prequalification round, which was designed to identify a candidate or candidates to be awarded the commission directly. We received 71 applications and invited five applicants for interviews in autumn 2016.

The commission was awarded to Edith Lundebrekke. The Committee attached importance to her track record of completed projects and her collaborative abilities. Lundebrekke will work with the architects/landscape architect to develop a proposal for approval by the Committee.



Sketch. Three sculptural elements positioned on the outdoor entrance plaza.

Artist

Edith Lundebrekke (born 1959) www.edith.no

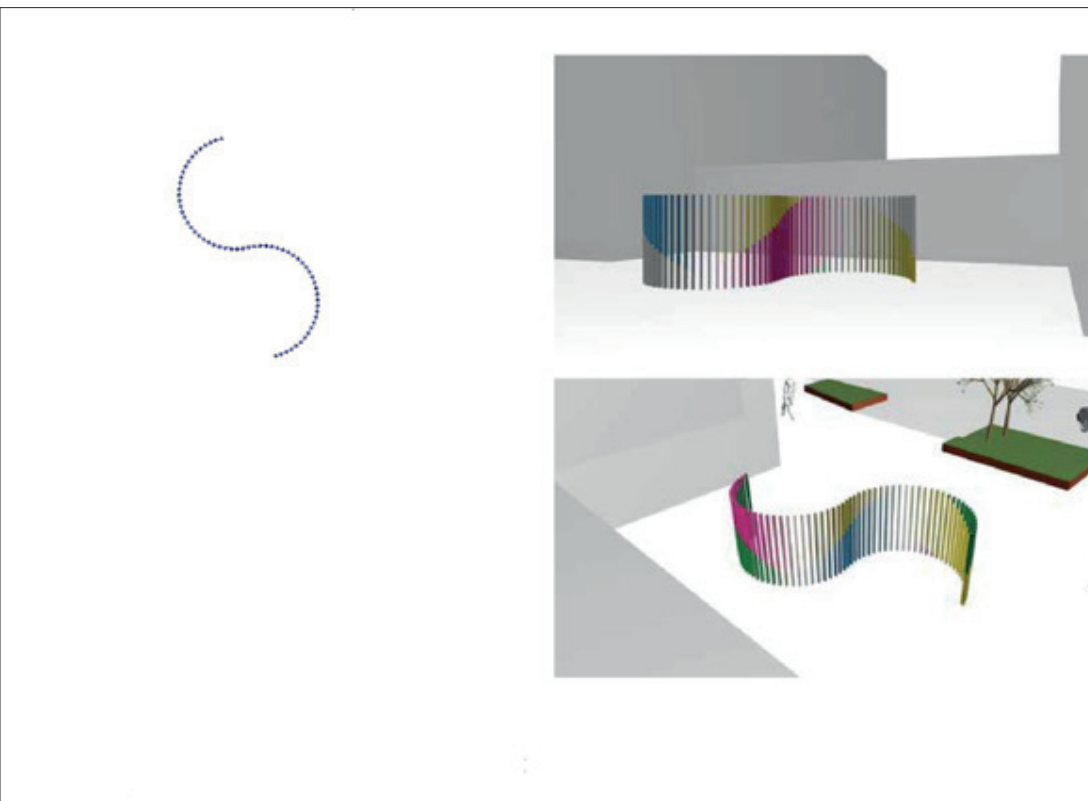
Studied at the National College of Applied Arts.

Her works blend colours through a combination of light, movement and reflection. Interested in researching systems and patterns. Has completed a number of public art commissions. Has exhibited in Norway and internationally. Her works have been purchased for several collections.

Lives and works in Trondheim, Norway.



From Norges Bank, the same work viewed from two different angles. Examples of works by Edith Lundebrekke.



Detail. The sculpture will form a sinuous curve by the main entrance. The colours of the different elements will be transmitted to nearby elements. The appearance of the work will change depending on one's viewpoint.

ALT 1 1:100

1.6 Landmark work

Cost of restoration: NOK 100,000

Cost of relocation, plinth, and foundation: NOK 300,000

Site description and reasons for choosing particular kinds of art/locations.

The Art Committee wants a work that will serve as a landmark for, and help establish the identity of, the new hospital. We want to use an existing bronze sculpture, “Mother and Child”, by the Swedish sculptor Ivar Viktor Johnsson, which was originally a gift from the people of Sweden. Previously, the sculpture was installed on the external wall of the Children’s Clinic. That building has now been demolished.

The sculpture will be conserved and restored. Our aim is to establish a historical link between the new hospital and its predecessor. We propose to install “Mother and Child” in the park area near Haukelandsbakken. A new plinth will be created in keeping with Ivar Viktor Johnsson’s work.



“Mother and Child” by Ivar

Johnsson being removed from the wall of the old Children’s Clinic. The plan is for the sculpture to take on a new life, welcoming patients, staff and visitors to the new hospital.

2. Acquisitions and the existing collection

The Committee wishes to postpone making decisions about subsidiary projects for Phase 2 (see under Progress). This is in the light of the Committee's experiences with Phase 1, where the Committee gained a more detailed understanding of the building during the construction process. We have discussed two ongoing projects:

2.1 The existing collection

Project cost NOK 250,000

This includes constructing new plinths for sculptures, as well as new mounts and frames for two-dimensional works. As a general rule, the Committee envisages that these works will remain with the clinical units that currently "own" them. The Committee will review the collection and consider potential locations for the works, whether new frames are required, and so on.

The Committee has also purchased artworks for Marie Joys Building, where the Children's Clinic is located temporarily until it moves into the new building in spring 2023. These purchases have not come out of our budget.



Example of a work from the existing collection. Hilmar Fredriksen's "Card Index" series consists of several hundred small drawings, of which Haukeland has purchased 36.

Works have been purchased by the following artists:

- **Hilmar Fredriksen**, 36 works from his “Card Index” series;
- **Håkon Anton Fagerås**, 1 marble sculpture;
- **Synneva Heradstveit**, 6 works; and
- **Ingrid Haukelisæter**, 2 works.

All the two-dimensional works have already been framed in the same type of frame that we used for Phase 1. This means they can be installed quickly and easily once Phase 2 is completed.

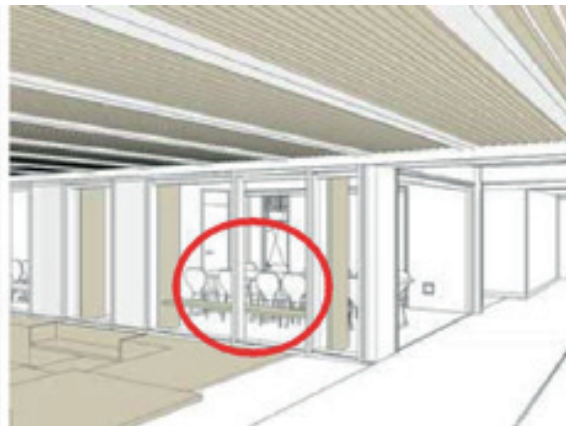
In addition, Marie Joys’ Building has purchased 15 art objects by Line Hvoslef. The objects are small sculptural shapes, each slightly smaller than a shoebox. The objects are colourful and interactive. Some make noises, while others have peepholes that allow one to view miniature worlds inside. The idea is to find locations for these objects so that they can be “discovered”. The staff at the Children’s Clinic have requested that all these objects be relocated with the clinic when it moves into the new building.

Work: When little

Artist: Håkon Anton Fagerås

Intended location.

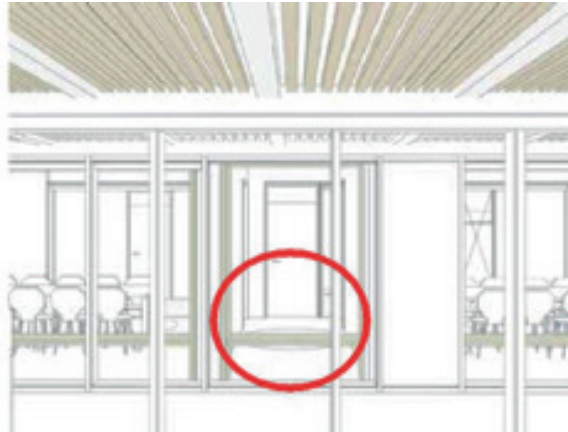
The Committee wishes to locate these sculptures on wall-mounted plinths in three meeting rooms on Level 1. The interiors of all the rooms are visible from public areas. This strategy will ensure that the sculptures are protected but also easily viewed by the public.



Baby No. 1 will be placed on a wall-mounted plinth in Meeting Room (F50.05.002), and will be visible to users of the lounge/foyer area.



Baby No.2 will be placed inside Meeting Room (F50.05.067), and will be visible to users of the main staircase and foyer area.



Baby No.3 will be placed inside Lobby (F50.05.067), and will be visible to users of the auditorium, the auditorium lobby, and the foyer area outside.

2.2 Purchases of autonomous artworks

The total budget for this category of acquisitions is NOK 300,000.

The Committee will purchase 2–3 sculptures for the garden areas, in addition to the major garden projects. The Committee will prepare a subsidiary art plan for each individual project when the time comes to select artists. It may be expedient to await the result of the competition before making choices about these works. The Committee envisages that it will be in a position to purchase works during 2020, or in early 2021.

The Committee will also consider the purchase of two-dimensional works for the interior of the hospital once the plan for the existing collection has been finalized.



From Phase 1: Petter Hepsø, Inverse XI, XII and XIII.

The Committee also envisages purchasing new works for Phase 2, in order to complement the existing collection.

3. Education/information

The Committee attaches great importance to the users' experience of the art, and has devised an education/information programme that is anchored in resource-rich environments both within and outside the hospital. In developing its Art Plan strategy, the Committee has been in contact with the Hospital School, the Play Therapy Service and the Disability Support Service. We have also contacted institutions outside the hospital: Art Council Norway and its Kunstløftet programme [a programme designed to promote art for children and teenagers]; and Bergen Art Museum – KODE.

Our goal is to implement a multi-pronged education strategy, which will employ traditional tools such as publications while also employing strategies aimed at a younger audience. As each individual work is completed, we will consider developing related publications; making information available via the hospital intranet; or other forms of educational activity.

The Committee envisages adopting the following education/information strategies:



Education is an important component of the art programme. Educational activities for child users will need to be specially adapted.

3.1 Book projects

As mentioned in the general Art Plan, the Committee wishes to invite children's writer illustrators to create illustrated books with stories based on the hospital's art and gardens. We envisage two such publications for Phase 2, one targeted at younger children and one at older children/teenagers.

The art budget will allow for print runs of 1,000, including fees for the artists, layout, production and printing. The hospital will be able to order extra copies in future if necessary.

Budget for Phase 2: NOK 150,000–NOK 300,000 for each book.

Artists

Øyvind Torseter (born 1992) www.olalys.com

Studied visual communication. Illustrator and cartoonist. Has published several compilations, books and animations. Spends a lot of time working with electronic media when not drawing. Lysgaard's style is reminiscent of street art and appeals to a young audience. Haukeland's Youth Council was involved in the process that resulted in the Lysgaard's selection.

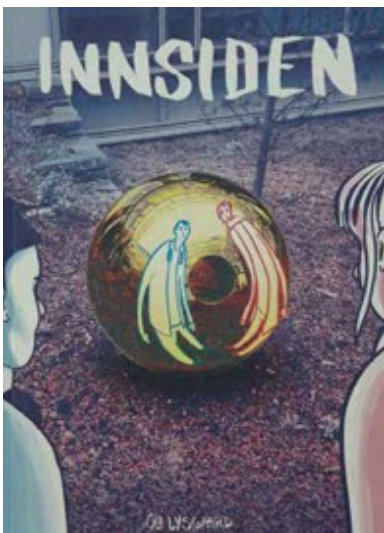
Lives and works in Bergen, Norway.

Ola Olsen Lysgaard (born 1972)

https://en.wikipedia.org/wiki/%C3%98yvind_Torseter

Studied at the Merkantil Institutt, Oslo; Skolen for Grafisk Design, Oslo; and the Kent Institute of Art and Design, Maidstone, UK. Works with traditional and digital media, and is particularly interested in drawing. Also experiments with graphic effects and three-dimensional collage. Prizewinning illustrator. Widely considered one of the best children's picture book illustrators in Norway, and is also well known for his drawings.

Lives and works in Oslo, Norway.



Innsiden [The Inside]
by Ola Lysgaard and

Kunsten å finne perler [The Art of Finding Pearls]
by Øyvind Torseter

are education projects targeted at children of various ages.

This project will be continued in Phase 2.

Educational activities requiring users to seek out material.

This could involve printed materials of various kinds. Initially, the Committee envisages simple folders that can easily be reused and updated with new projects. We will also make use of Haukeland's existing digital platforms. We will use both of these communication strategies, with the aim of making materials easy to access and understand. Budget item: Education/information, printed materials.

Educational activities where the educator seeks out the user.

This will apply to those projects where the artist involves hospital users in the execution of the work. The costs will be covered by the budgets for the individual projects.

Information about current projects.

Presenting information about competitions and events when projects are inaugurated. This is handled through the use of press releases and Helse Bergen's intranet. Budget item: Education/information, entertainment, events to inaugurate new projects, exhibitions.

In addition to the activities listed above, the Committee will also install signs with information about the projects. Here we should also consider special signs for visually-impaired users, for example. Budget items: Education/information, signs.

4. Budget

The principal figures below show the amounts remaining for the individual budget items. The total budget for Phase 2 is NOK 14,500,000. Some projects are already underway. We have requested that the client increase the art budget in line with inflation.

As at 24 April 2019

4000 General project management	865,786.69
6000 Art-related costs	32,571.00
6400 Commission	33,750.50
6401 Three gardens BUS2	3,269,360.40
6402 Entrance BUS2	1,119,274.97
6403 Glass walls BUS2	416,346.20
6404 Acquisitions of autonomous artworks	330,730.00
6405 Books	420,000.00
6406 Outdoor entrance plaza	2,150,000.00
6407 Existing art collection	399,250.00
6409 Floor-based art	525,000.00
6500 Education/information	1,133,506.75
6900 Reserve/ art	817,229.89
Implementation of commissions (5%)	1,375,000.00
	12,866,484.90
110701 Haukeland University Hospital BUS2	0

5. Progress plan

Approval of Art Plan and budget, BUS2	Spring 2019
Project 1.1 Gardens	
• “Pearls”. Approval of sketches	Spring 2020
o Production and completion	Autumn 2022 (subject to construction schedule)
• Monumental work. Competition, call-out	Autumn 2019
o Award of commission	Spring 2020
o Production and completion	Autumn 2022 (subject to construction schedule)
• Other projects	
o Purchase of autonomous artworks	Autumn 2020/Spring 2021
Project 1.2 Entrance area Level -1 (U1)	
• Chill out area, award of commission	Autumn 2019
o Approval of sketches	Summer 2020
o Production and completion	Autumn 2022 (subject to construction schedule)
• Public entrance Level -1 (U1), award of commission	Autumn 2019
o Approval of sketches	Summer 2020
o Production and completion	Autumn 2022 (subject to construction schedule)
Project 1.3 Glass walls	
• Award of commission	Spring 2019
o Production and completion	Summer/Autumn 2019
Project 1.4 Floor	
• Award of commission Autumn 2019	
o Production and completion	Autumn 2020 (subject to construction schedule)
Project 1.5 Outdoor entrance plaza	
• Award of commission	Autumn 2016
o Preparatory project	Autumn 2018
o Approval of outline proposal	Spring 2019
o Production and completion	Autumn 2022 (subject to construction schedule)
Project 1.6 Landmark work	
• Restoration of “Mother and Child” sculpture by Ivar V. Johnsson	
o Plinth, ordering and production	Spring 2019
o Installation subject to construction schedule	2022
Project 2.1, Existing collection	
• New frames	2022
o Hanging scheme	Winter 2022/23
Project 2.2	
• Project decisions	Spring 2020
o Selection of artists, approval of subsidiary art plan	Autumn 2020
Project 3.1	
• Educational/informational book project Start-up	Winter 2022/23
o Approval of sketches	Spring 2023
o Book project completed	Autumn 2023

Helse Bergen HF
Haukeland University Hospital, Jonas Lies vei 65
NO-5051 Bergen, Norway

postmottak@helse-bergen.no

www.helse-bergen.no

Photo: Øystein Klakegg and Pål Hoff

May 2019, Art Committee for the new hospital buildings

